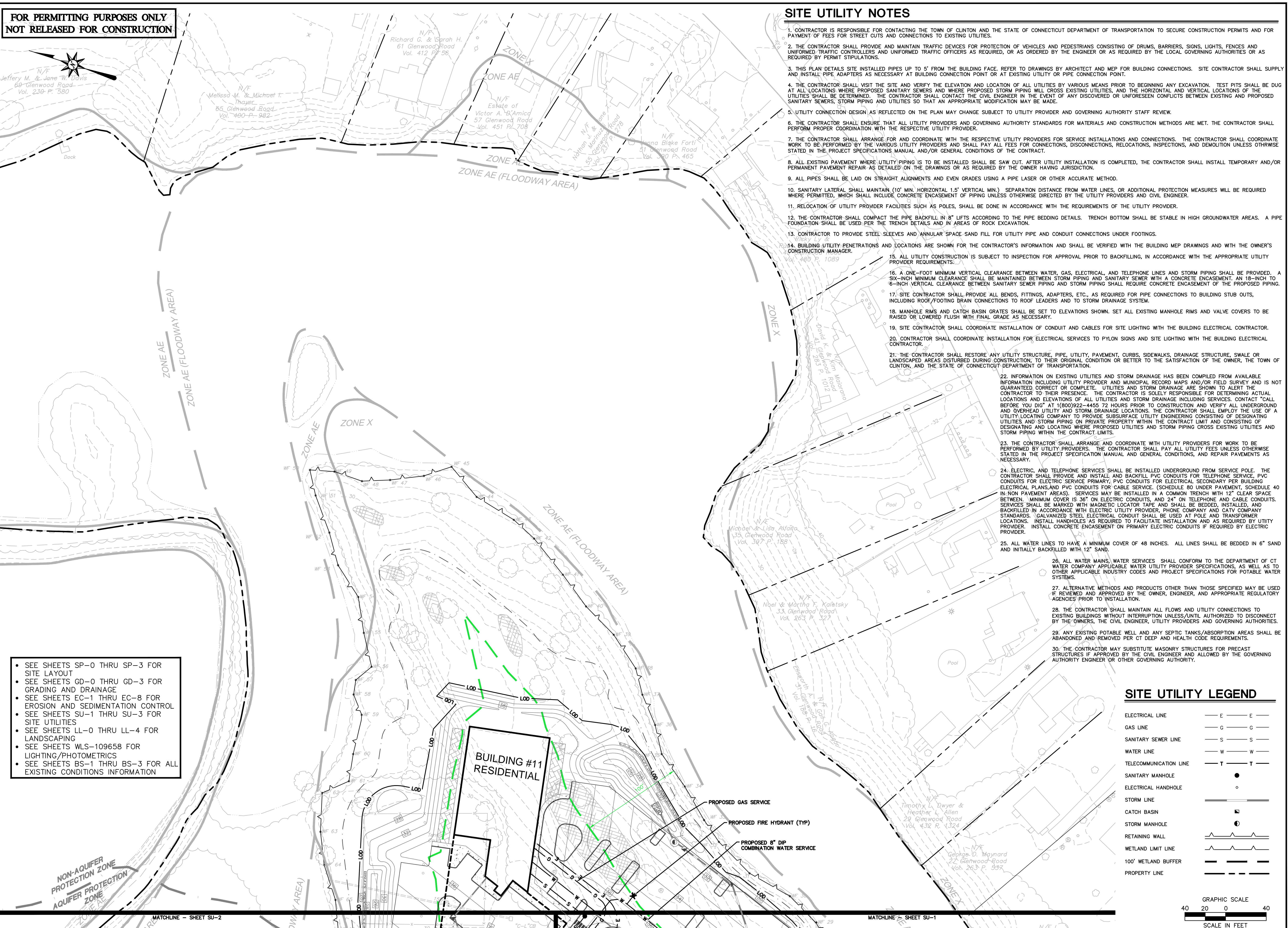
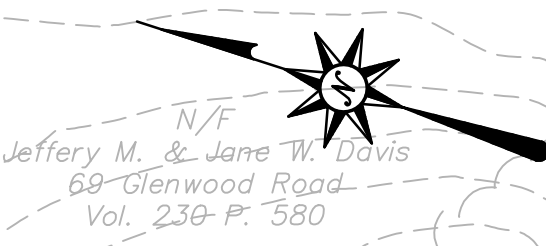


FOR PERMITTING PURPOSES ONLY  
NOT RELEASED FOR CONSTRUCTION



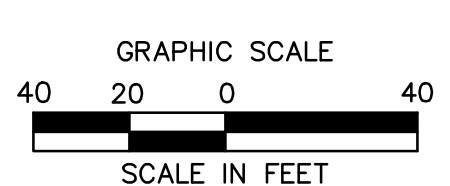
**SITE UTILITY NOTES**

- CONTRACTOR IS RESPONSIBLE FOR CONTACTING THE TOWN OF CLINTON AND THE STATE OF CONNECTICUT DEPARTMENT OF TRANSPORTATION TO SECURE CONSTRUCTION PERMITS AND FOR PAYMENT OF FEES FOR STREET CUTS AND CONNECTIONS TO EXISTING UTILITIES.
- THE CONTRACTOR SHALL PROVIDE AND MAINTAIN TRAFFIC DEVICES FOR PROTECTION OF VEHICLES AND PEDESTRIANS CONSISTING OF DRUMS, BARRIERS, SIGNS, LIGHTS, FENCES AND UNIFORMED TRAFFIC CONTROLLERS AND UNIFORMED TRAFFIC OFFICERS AS REQUIRED, OR AS ORDERED BY THE ENGINEER OR AS REQUIRED BY THE LOCAL GOVERNING AUTHORITIES OR AS REQUIRED BY PERMIT STIPULATIONS.
- THIS PLAN DETAILS SITE INSTALLED PIPES UP TO 5' FROM THE BUILDING FACE. REFER TO DRAWINGS BY ARCHITECT AND MEP FOR BUILDING CONNECTIONS. SITE CONTRACTOR SHALL SUPPLY AND INSTALL PIPE ADAPTERS AS NECESSARY AT BUILDING CONNECTION POINT OR AT EXISTING UTILITY OR PIPE CONNECTION POINT.
- THE CONTRACTOR SHALL VISIT THE SITE AND VERIFY THE ELEVATION AND LOCATION OF ALL UTILITIES BY VARIOUS MEANS PRIOR TO BEGINNING ANY EXCAVATION. TEST PITS SHALL BE DUG AT ALL LOCATIONS WHERE PROPOSED SANITARY SEWERS AND WHERE PROPOSED STORM PIPING WILL CROSS EXISTING UTILITIES, AND THE HORIZONTAL AND VERTICAL LOCATIONS OF THE UTILITIES SHALL BE DETERMINED. THE CONTRACTOR SHALL CONTACT THE CIVIL ENGINEER IN THE EVENT OF ANY DISCOVERED OR UNFORESEEN CONFLICTS BETWEEN EXISTING AND PROPOSED SANITARY SEWERS, STORM PIPING AND UTILITIES SO THAT AN APPROPRIATE MODIFICATION MAY BE MADE.
- UTILITY CONNECTION DESIGN AS REFLECTED ON THE PLAN MAY CHANGE SUBJECT TO UTILITY PROVIDER AND GOVERNING AUTHORITY STAFF REVIEW.
- THE CONTRACTOR SHALL ENSURE THAT ALL UTILITY PROVIDERS AND GOVERNING AUTHORITY STANDARDS FOR MATERIALS AND CONSTRUCTION METHODS ARE MET. THE CONTRACTOR SHALL PERFORM PROPER COORDINATION WITH THE RESPECTIVE UTILITY PROVIDER.
- THE CONTRACTOR SHALL ARRANGE FOR AND COORDINATE WITH THE RESPECTIVE UTILITY PROVIDERS FOR SERVICE INSTALLATIONS AND CONNECTIONS. THE CONTRACTOR SHALL COORDINATE WORK TO BE PERFORMED BY THE VARIOUS UTILITY PROVIDERS AND SHALL PAY ALL FEES FOR CONNECTIONS, DISCONNECTIONS, RELOCATIONS, INSPECTIONS, AND DEMOLITION UNLESS OTHERWISE STATED IN THE PROJECT SPECIFICATIONS MANUAL AND/OR GENERAL CONDITIONS OF THE CONTRACT.
- ALL EXISTING PAVEMENT WHERE UTILITY PIPING IS TO BE INSTALLED SHALL BE SAW CUT. AFTER UTILITY INSTALLATION IS COMPLETED, THE CONTRACTOR SHALL INSTALL TEMPORARY AND/OR PERMANENT PAVEMENT REPAIR AS DETAILED ON THE DRAWINGS OR AS REQUIRED BY THE OWNER HAVING JURISDICTION.
- ALL PIPES SHALL BE LAID ON STRAIGHT ALIGNMENTS AND EVEN GRADES USING A PIPE LASER OR OTHER ACCURATE METHOD.
- SANITARY LATERAL SHALL MAINTAIN (10' MIN. HORIZONTAL 1.5' VERTICAL MIN.) SEPARATION DISTANCE FROM WATER LINES, OR ADDITIONAL PROTECTION MEASURES WILL BE REQUIRED WHERE PERMITTED, WHICH SHALL INCLUDE CONCRETE ENCASEMENT OF PIPING UNLESS OTHERWISE DIRECTED BY THE UTILITY PROVIDERS AND CIVIL ENGINEER.
- RELOCATION OF UTILITY PROVIDER FACILITIES SUCH AS POLES, SHALL BE DONE IN ACCORDANCE WITH THE REQUIREMENTS OF THE UTILITY PROVIDER.
- THE CONTRACTOR SHALL COMPACT THE PIPE BACKFILL IN 8" LIFTS ACCORDING TO THE PIPE BEDDING DETAILS. TRENCH BOTTOM SHALL BE STABLE IN HIGH GROUNDWATER AREAS. A PIPE FOUNDATION SHALL BE USED PER THE TRENCH DETAILS AND IN AREAS OF ROCK EXCAVATION.
- CONTRACTOR TO PROVIDE STEEL SLEEVES AND ANNULAR SPACE SAND FILL FOR UTILITY PIPE AND CONDUIT CONNECTIONS UNDER FOOTINGS.
- BUILDING UTILITY PENETRATIONS AND LOCATIONS ARE SHOWN FOR THE CONTRACTOR'S INFORMATION AND SHALL BE VERIFIED WITH THE BUILDING MEP DRAWINGS AND WITH THE OWNER'S CONSTRUCTION MANAGER.
- ALL UTILITY CONSTRUCTION IS SUBJECT TO INSPECTION FOR APPROVAL PRIOR TO BACKFILLING, IN ACCORDANCE WITH THE APPROPRIATE UTILITY PROVIDER REQUIREMENTS.
- A ONE-FOOT MINIMUM VERTICAL CLEARANCE BETWEEN WATER, GAS, ELECTRICAL, AND TELEPHONE LINES AND STORM PIPING SHALL BE PROVIDED. A SIX-INCH MINIMUM CLEARANCE SHALL BE MAINTAINED BETWEEN STORM PIPING AND SANITARY SEWER WITH A CONCRETE ENCASEMENT. AN 18-INCH TO 24-INCH VERTICAL CLEARANCE BETWEEN SANITARY SEWER PIPING AND STORM PIPING SHALL REQUIRE CONCRETE ENCASEMENT OF THE PROPOSED PIPING.
- SITE CONTRACTOR SHALL PROVIDE ALL BENDS, FITTINGS, ADAPTERS, ETC., AS REQUIRED FOR PIPE CONNECTIONS TO BUILDING STUB OUTS, INCLUDING ROOF/FOOTING DRAIN CONNECTIONS TO ROOF LEADERS AND TO STORM DRAINAGE SYSTEM.
- MANHOLE RIMS AND CATCH BASIN GRATES SHALL BE SET TO ELEVATIONS SHOWN. SET ALL EXISTING MANHOLE RIMS AND VALVE COVERS TO BE RAISED OR LOWERED FLUSH WITH FINAL GRADE AS NECESSARY.
- SITE CONTRACTOR SHALL COORDINATE INSTALLATION OF CONDUIT AND CABLES FOR SITE LIGHTING WITH THE BUILDING ELECTRICAL CONTRACTOR.
- CONTRACTOR SHALL COORDINATE INSTALLATION FOR ELECTRICAL SERVICES TO PYLON SIGNS AND SITE LIGHTING WITH THE BUILDING ELECTRICAL CONTRACTOR.
- THE CONTRACTOR SHALL RESTORE ANY UTILITY STRUCTURE, PIPE, UTILITY, PAVEMENT, CURBS, SIDEWALKS, DRAINAGE STRUCTURE, SWALE OR LANDSCAPED AREAS DISTURBED DURING CONSTRUCTION, TO THEIR ORIGINAL CONDITION OR BETTER TO THE SATISFACTION OF THE OWNER, THE TOWN OF CLINTON, AND THE STATE OF CONNECTICUT DEPARTMENT OF TRANSPORTATION.
- INFORMATION ON EXISTING UTILITIES AND STORM DRAINAGE HAS BEEN COMPILED FROM AVAILABLE INFORMATION INCLUDING UTILITY PROVIDER AND MUNICIPAL RECORD MAPS AND/OR FIELD SURVEY AND IS NOT GUARANTEED CORRECT OR COMPLETE. UTILITIES AND STORM DRAINAGE ARE SHOWN TO ALERT THE CONTRACTOR TO THEIR PRESENCE. THE CONTRACTOR IS SOLELY RESPONSIBLE FOR DETERMINING ACTUAL LOCATIONS AND ELEVATIONS OF ALL UTILITIES AND STORM DRAINAGE INCLUDING SERVICES. CONTACT "CALL BEFORE YOU DIG" AT (800)922-4455 72 HOURS PRIOR TO CONSTRUCTION AND VERIFY ALL UNDERGROUND AND OVERHEAD UTILITY AND STORM DRAINAGE LOCATIONS. THE CONTRACTOR SHALL EMPLOY THE USE OF A UTILITY LOCATING COMPANY TO PROVIDE SUBSURFACE UTILITY ENGINEERING CONSISTING OF DESIGNATING UTILITIES AND STORM PIPING ON PRIVATE PROPERTY WITHIN THE CONTRACT LIMIT AND CONSISTING OF DESIGNATING AND LOCATING WHERE PROPOSED UTILITIES AND STORM PIPING CROSS EXISTING UTILITIES AND STORM PIPING WITHIN THE CONTRACT LIMITS.
- THE CONTRACTOR SHALL ARRANGE AND COORDINATE WITH UTILITY PROVIDERS FOR WORK TO BE PERFORMED BY UTILITY PROVIDERS. THE CONTRACTOR SHALL PAY ALL UTILITY FEES UNLESS OTHERWISE STATED IN THE PROJECT SPECIFICATION MANUAL AND GENERAL CONDITIONS, AND REPAIR PAVEMENTS AS NECESSARY.
- ELECTRIC AND TELEPHONE SERVICES SHALL BE INSTALLED UNDERGROUND FROM SERVICE POLE. THE CONTRACTOR SHALL PROVIDE AND INSTALL AND BACKFILL PVC CONDUITS FOR TELEPHONE SERVICE, PVC CONDUITS FOR ELECTRIC SERVICE PRIMARY AND CONDUITS FOR ELECTRICAL SECONDARY PER BUILDING ELECTRICAL PLANS, AND PVC CONDUITS FOR CABLE SERVICE (SCHEDULE 80 UNDER PAVEMENT, SCHEDULE 40 IN NON PAVEMENT AREAS). SERVICES MAY BE INSTALLED IN A COMMON TRENCH WITH 12" CLEAR SPACE BETWEEN. MINIMUM COVER IS 36" ON ELECTRIC CONDUITS, AND 24" ON TELEPHONE AND CABLE CONDUITS. SERVICES SHALL BE MARKED WITH MAGNETIC LOCATOR TAPE AND SHALL BE BEDDED, INSTALLED, AND BACKFILLED IN ACCORDANCE WITH ELECTRIC UTILITY PROVIDER, PHONE COMPANY AND CATV COMPANY STANDARDS. GALVANIZED STEEL ELECTRICAL CONDUIT SHALL BE USED AT POLE AND TRANSFORMER LOCATIONS. INSTALL HANDHOLES AS REQUIRED TO FACILITATE INSTALLATION AND AS REQUIRED BY UTILITY PROVIDER. INSTALL CONCRETE ENCASEMENT ON PRIMARY ELECTRIC CONDUITS IF REQUIRED BY ELECTRIC PROVIDER.
- ALL WATER LINES TO HAVE A MINIMUM COVER OF 48 INCHES. ALL LINES SHALL BE BEDDED IN 6" SAND AND INITIALLY BACKFILLED WITH 12" SAND.
- ALL WATER MAINS, WATER SERVICES SHALL CONFORM TO THE DEPARTMENT OF CT WATER COMPANY APPLICABLE WATER UTILITY PROVIDER SPECIFICATIONS, AS WELL AS TO OTHER APPLICABLE INDUSTRY CODES AND PROJECT SPECIFICATIONS FOR POTABLE WATER SYSTEMS.
- ALTERNATIVE METHODS AND PRODUCTS OTHER THAN THOSE SPECIFIED MAY BE USED IF REVIEWED AND APPROVED BY THE OWNER, ENGINEER, AND APPROPRIATE REGULATORY AGENCIES PRIOR TO INSTALLATION.
- THE CONTRACTOR SHALL MAINTAIN ALL FLOWS AND UTILITY CONNECTIONS TO EXISTING BUILDINGS WITHOUT INTERRUPTION UNLESS/UNTIL AUTHORIZED TO DISCONNECT BY THE OWNERS, THE CIVIL ENGINEER, UTILITY PROVIDERS AND GOVERNING AUTHORITIES.
- ANY EXISTING POTABLE WELL AND ANY SEPTIC TANKS/ABSORPTION AREAS SHALL BE ABANDONED AND REMOVED PER CT DEEP AND HEALTH CODE REQUIREMENTS.
- THE CONTRACTOR MAY SUBSTITUTE MASONRY STRUCTURES FOR PRECAST STRUCTURES IF APPROVED BY THE CIVIL ENGINEER AND ALLOWED BY THE GOVERNING AUTHORITY ENGINEER OR OTHER GOVERNING AUTHORITY.

- SEE SHEETS SP-0 THRU SP-3 FOR SITE LAYOUT
- SEE SHEETS GD-0 THRU GD-3 FOR GRADING AND DRAINAGE
- SEE SHEETS EC-1 THRU EC-8 FOR EROSION AND SEDIMENTATION CONTROL
- SEE SHEETS SU-1 THRU SU-3 FOR SITE UTILITIES
- SEE SHEETS LL-0 THRU LL-4 FOR LANDSCAPING
- SEE SHEETS WLS-109658 FOR LIGHTING/PHOTOMETRICS
- SEE SHEETS BS-1 THRU BS-3 FOR ALL EXISTING CONDITIONS INFORMATION

**SITE UTILITY LEGEND**

ELECTRICAL LINE	— E — E —
GAS LINE	— G — G —
SANITARY SEWER LINE	— S — S —
WATER LINE	— W — W —
TELECOMMUNICATION LINE	— T — T —
SANITARY MANHOLE	●
ELECTRICAL HANDHOLE	○
STORM LINE	—
CATCH BASIN	■
STORM MANHOLE	⊙
RETAINING WALL	—
WETLAND LIMIT LINE	—
100' WETLAND BUFFER	—
PROPERTY LINE	—



ARCHITECTURE  
ENGINEERING  
ENVIRONMENTAL  
LAND SURVEYING

355 Research Parkway  
Meriden, CT 06450  
(203) 630-1406  
(203) 630-2615 Fax



THE VILLAGE AT MILL POND  
11 KILLINGWORTH TURNPIKE  
CLINTON, CONNECTICUT 06413

REVISIONS	Date	REVISION
No. 1.	1/22/16	GENERAL REVISION
No. 2.	2/24/16	REVISED PER REVIEW COMMENTS

Designed: E.C.P.  
Drawn: M.A.A.  
Checked: ---  
Approved: M.M.C.  
Scale: 1"=40'  
Project No: 14C4892  
Date: 1/4/16

CAD File: SU14C489201  
Title: SITE UTILITY PLAN AND NOTES

Sheet No. **SU-3**