

**THE VILLAGE AT MILL POND**  
11 KILLINGWORTH TURNPIKE  
CLINTON, CONNECTICUT 06413

REVISIONS	No.	Date	Desc.	GENERAL REVISION	REVISED PER REVIEW COMMENTS
	1.	1/22/16			
	2.	2/24/16			

Designed	E.C.P.
Drawn	M.A.A.
Checked	---
Approved	M.M.C.
Scale	1"=40'
Project No.	14C4892
Date	1/4/16

CAD File: SU14C489201

Title  
**SITE UTILITY PLAN**

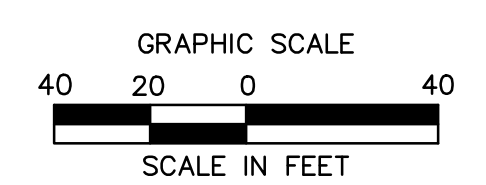
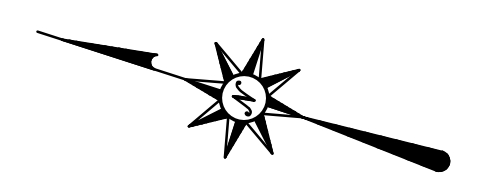
Sheet No.

**SU-2**

**SITE UTILITY LEGEND**

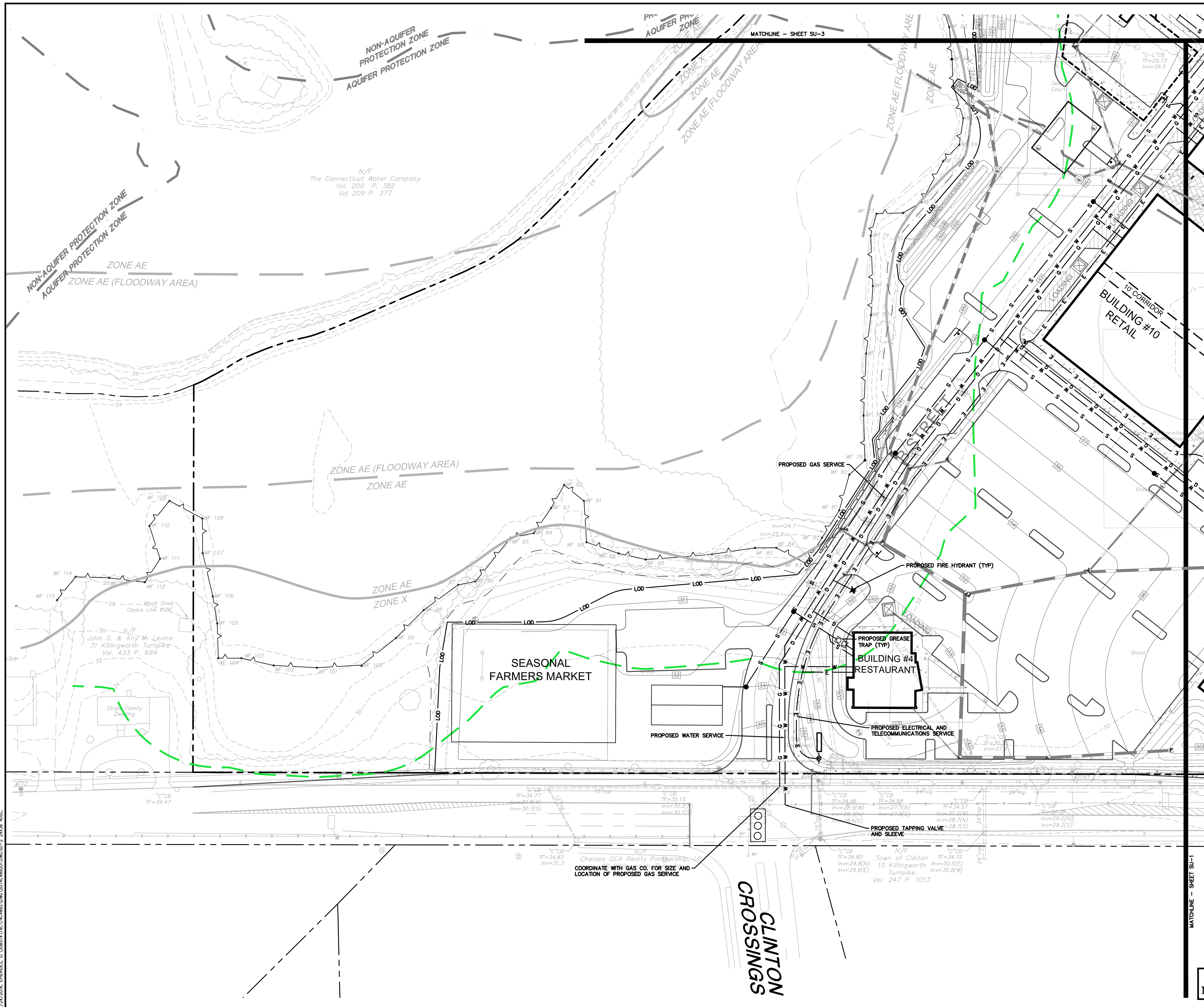
ELECTRICAL LINE	— E — E —
GAS LINE	— G — G —
SANITARY SEWER LINE	— S — S —
WATER LINE	— W — W —
TELECOMMUNICATION LINE	— T — T —
SANITARY MANHOLE	●
ELECTRICAL HANDHOLE	○
STORM LINE	— S — S —
CATCH BASIN	□
STORM MANHOLE	○
RETAINING WALL	— [ ] —
WETLAND LIMIT LINE	— [ ] —
100' WETLAND BUFFER	— [ ] —
PROPERTY LINE	— [ ] —

- SEE SHEETS SP-0 THRU SP-3 FOR SITE LAYOUT
- SEE SHEETS GD-0 THRU GD-3 FOR GRADING AND DRAINAGE
- SEE SHEETS EC-1 THRU EC-8 FOR EROSION AND SEDIMENTATION CONTROL
- SEE SHEETS SU-1 THRU SU-3 FOR SITE UTILITIES
- SEE SHEETS LL-0 THRU LL-4 FOR LANDSCAPING
- SEE SHEETS WLS-109658 FOR LIGHTING/PHOTOMETRICS
- SEE SHEETS BS-1 THRU BS-3 FOR ALL EXISTING CONDITIONS INFORMATION



**SEE SHEET SU-3 FOR SITE UTILITY NOTES**

**FOR PERMITTING PURPOSES ONLY  
NOT RELEASED FOR CONSTRUCTION**



2/24/2016, 10:00 AM, G:\0851\14C489201\DWG\SU-2.dwg, SU-2, 24x36, A0SC