



THE VILLAGE AT MILL POND
11 KILLINGWORTH TURNPIKE
CLINTON, CONNECTICUT 06413

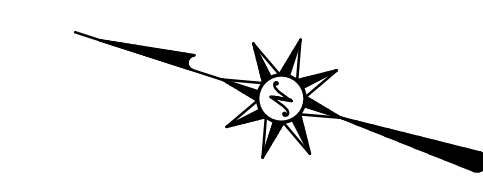
REVISIONS
No. 1
Date 1/22/16
Desc. GENERAL REVISION

Designed E.C.P.
Drawn M.A.A.
Checked M.M.C.
Approved
Scale 1"=40'
Project No. 14C4892
Date 1/4/16

CAD File: EC14C489201

Title
EROSION AND
SEDIMENTATION
CONTROL PLAN
(PHASE 2)

Sheet No.

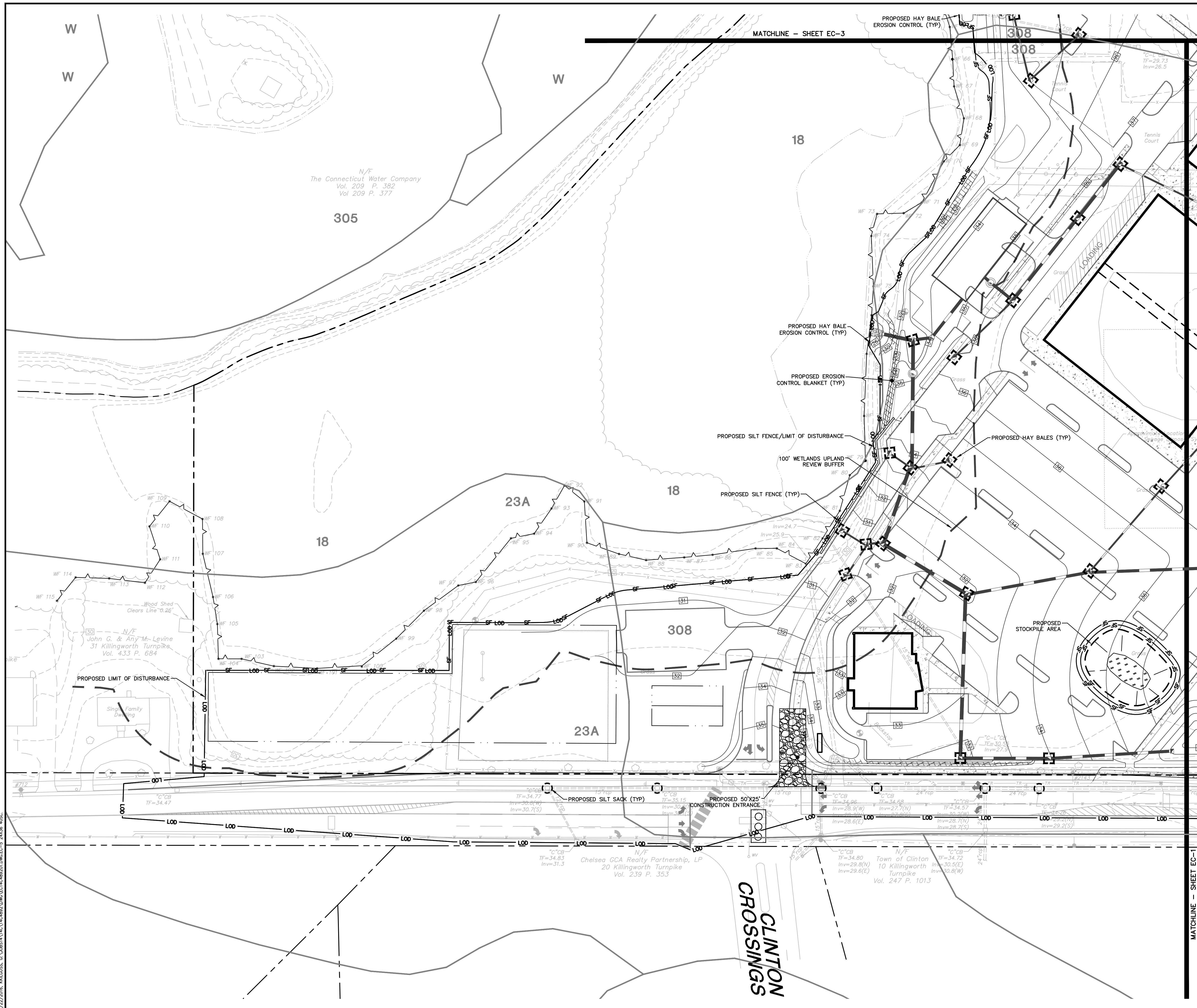


EROSION CONTROL LEGEND

CONTROL MEASURE	ILLUSTRATION
HAY BALES AT CATCH BASINS	
HAY BALE EROSION CONTROL	
SILT SACKS AT CATCH BASINS	
SEDIMENT CHECK DAM	
DIVERSION SWALE	
SILT FENCE	
LIMIT OF DISTURBANCE LINE	
CONSTRUCTION ENTRANCE	
STOCKPILE AREA WITH DOUBLE ROW SILT FENCE OR SINGLE ROW WOOD CHIP BERM WITH HAY BALES	

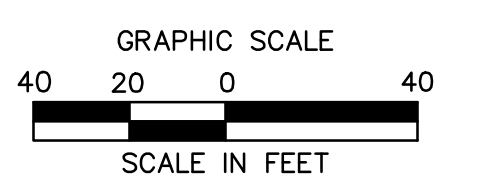
SOIL TYPES

- 13-WALPOLE SANDY LOAM, 0 TO 3 PERCENT SLOPES
- 18-CADEN FREETOWN SOILS, 0 TO 2 PERCENT SLOPES
- 23A-SUDBURY SANDY LOAM, 0 TO 5 PERCENT SLOPES
- 29A-ADAWAM FINE SANDY LOAM, 0 TO 3 PERCENT SLOPES
- 29B-ADAWAM FINE SANDY LOAM, 3 TO 8 PERCENT SLOPES
- 34A-MERRIMAC FINE SANDY LOAM, 0 TO 3 PERCENT SLOPES
- 73C-CHARLTON-CHATFIELD COMPLEX, 3 TO 15 PERCENT SLOPES, VERY ROCKY
- 238C-HINCKLEY-URBAN LAND COMPLEX, 3 TO 15 PERCENT SLOPES
- 305-UDORTENTS-PITS COMPLEX, GRAVELLY
- 307-URBAN LAND
- 308-UDORTENTS, SMOOTHED
- W-WATER



**FOR PERMITTING PURPOSES ONLY
NOT RELEASED FOR CONSTRUCTION**

**REFER TO SHEET EC-7 FOR
EROSION CONTROL NOTES**



1/22/2016, KKL/ISS, G. VORBI/14C489201/001/EC14C489201/001/EC-5 24x36 A05C