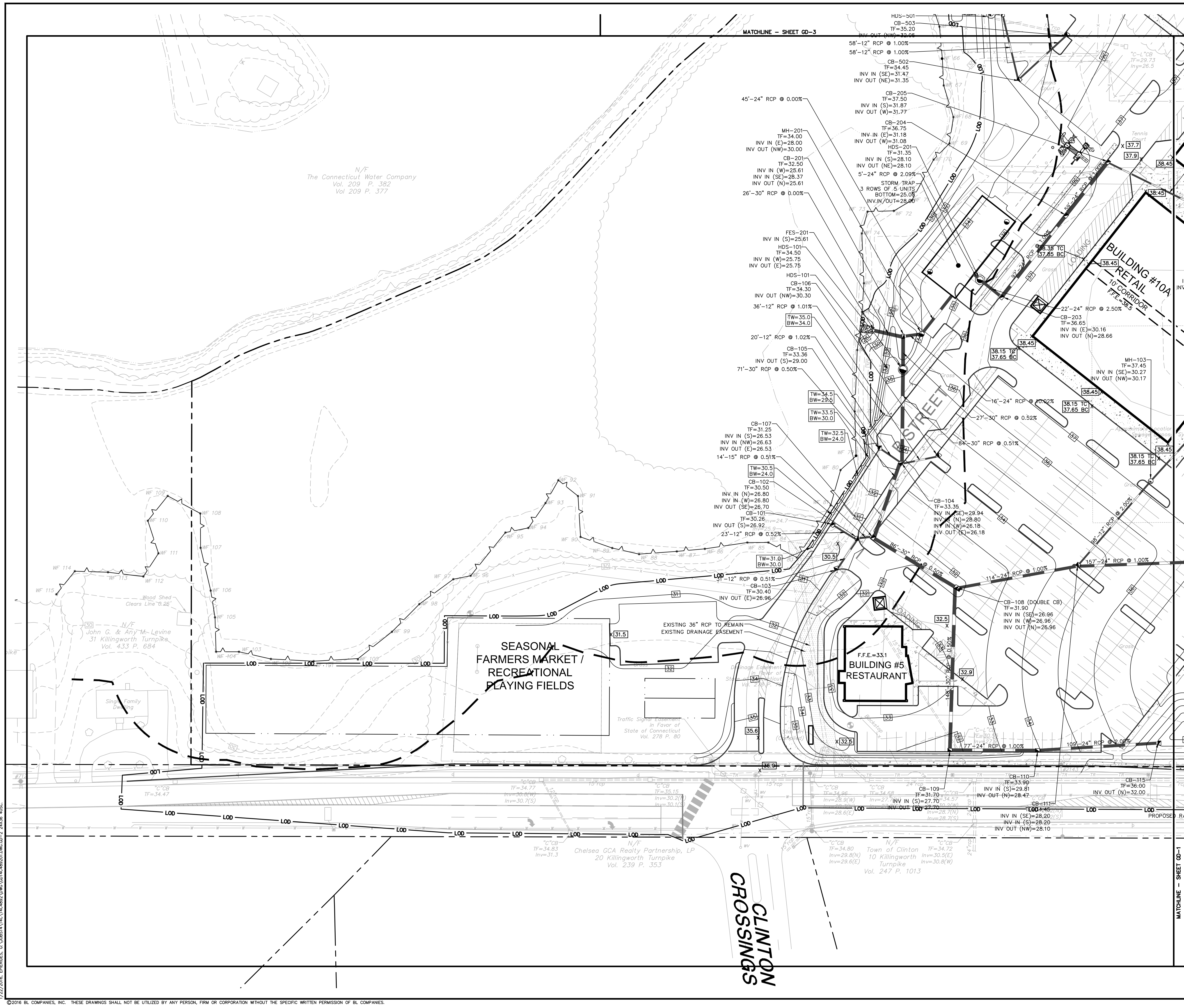
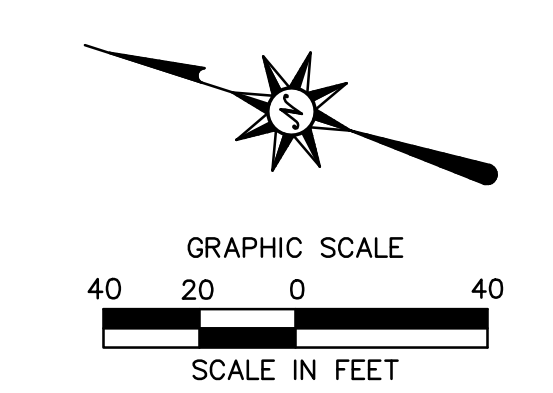


LEGEND

- CONCRETE PAVEMENT
- SAWCUT LINE. MATCH EXISTING GRADE.
- RETAINING WALL
- 6" CURB
- WETLANDS AREA
- 100' WETLANDS UPLAND REVIEW
- LIMIT OF DISTURBANCE
- PROPOSED 9'x18' PARKING SPACE INDICATOR
- PAINTED DIRECTIONAL ARROW
- PAINTED STOP BAR
- PROPERTY LINE
- BUILDING SETBACK
- RESIDENTIAL SETBACK
- PARKING SETBACK
- ADVANCED WASTEWATER TREATMENT
- CATCH BASIN
- MANHOLE
- HYDRODYNAMIC SEPARATOR
- STORM PIPE

**FOR PERMITTING PURPOSES ONLY
NOT RELEASED FOR CONSTRUCTION**



N/E
The Connecticut Water Company
Vol. 209 P. 382
Vol. 209 P. 377

N/E
John G. & Any M. Levine
31 Killingworth Turnpike
Vol. 433 P. 684

EXISTING 36" RCP TO REMAIN
EXISTING DRAINAGE EASEMENT

Traffic Signal Easement
in Favor of
State of Connecticut
Vol. 278 P. 80

N/E
Chelsea GCA Realty Partnership, LP
20 Killingworth Turnpike
Vol. 239 P. 353

N/E
Town of Clinton
10 Killingworth Turnpike
Vol. 247 P. 1013